



**Government of India  
Ministry of Earth Sciences  
India Meteorological Department**



**Press Release**

**Date: 23<sup>rd</sup> August, 2025**

**Time of Issue: 1345 hours IST**

**Subject: i) Under the influence of Low pressure area over Gangetic West Bengal & neighbourhood, heavy to very heavy rainfall with isolated extremely heavy falls very likely over Jharkhand and isolated heavy to very heavy rainfall over Bihar & Odisha on today, the 23<sup>rd</sup> August, 2025.**

**ii) Heavy to very heavy rainfall very likely to continue over Gujarat till 29<sup>th</sup> and over south Rajasthan till 26<sup>th</sup> August. Isolated extremely heavy rainfall also likely over East Rajasthan on 23<sup>rd</sup> & 24<sup>th</sup> and over north Gujarat on 23<sup>rd</sup> August, 2025.**

**Realised weather during past 24 hours till 0830 hours IST of today, the 23<sup>rd</sup> August, 2025:**

- ❖ **Heavy to very heavy rainfall at some places with exceptionally heavy falls ( $\geq 40$  cm)** has been recorded at isolated places over East Rajasthan and **Extremely heavy rainfall ( $\geq 21$  cm)** at isolated places over Jharkhand.
- ❖ **Very heavy rainfall (12-20 cm)** has been recorded at isolated places over Uttarakhand, Haryana, East Uttar Pradesh, West Madhya Pradesh, Odisha, Gujarat Region and Tamil Nadu.
- ❖ **Heavy rainfall (7-11 cm)** has been recorded at isolated places over Punjab, West Rajasthan, East Madhya Pradesh, Assam & Meghalaya, Nagaland, Chhattisgarh, Gangetic West Bengal, Bihar and Rayalaseema.

**For more details of realised weather, kindly refer [Annexure I](#).**

**i. Weather Systems, Forecast and Warnings (refer to Annexure II & III):**

- ❖ The Monsoon trough runs near its normal position.
- ❖ Under the influence of the upper air cyclonic circulation over Gangetic West Bengal & adjoining Bangladesh, a Low Pressure area has formed over Gangetic West Bengal & neighbourhood at 1730 hrs IST of yesterday, the 22<sup>nd</sup> August, 2025. The low pressure area persists over the same region at 0830 hrs IST of today, the 23<sup>rd</sup> August, 2025. It is likely to move west northwestwards across Jharkhand during next 24 hours and weaken gradually thereafter.
- ❖ An upper air cyclonic circulation lay over central parts of north Madhya Pradesh & adjoining areas of south Uttar Pradesh extends upto middle tropospheric levels tilting southwestwards with height.
- ❖ An upper air cyclonic circulation lay over Punjab and another over northeast Assam in lower tropospheric levels.
- ❖ A fresh low-pressure area is likely to form over northwest Bay of Bengal off Odisha-West Bengal coasts around 25th August 2025.

Under the influence of these systems, the following weather is likely:

**East & Central India:**

- ❖ **Extremely heavy rainfall** very likely over Jharkhand on 23<sup>rd</sup> August.
- ❖ Isolated **heavy rainfall** likely over West Madhya Pradesh on 28<sup>th</sup>; East Madhya Pradesh & Chhattisgarh during 23<sup>rd</sup>-27<sup>th</sup>; Vidarbha on 27<sup>th</sup> & 28<sup>th</sup>; Sub-Himalayan West Bengal & Sikkim, Jharkhand during 23<sup>rd</sup>-25<sup>th</sup>; Gangetic West Bengal on 23<sup>rd</sup> & 24<sup>th</sup>; Bihar during 23<sup>rd</sup>-26<sup>th</sup>; Odisha during 23<sup>rd</sup>-29<sup>th</sup> August with isolated **very heavy rainfall over West Madhya Pradesh, Chhattisgarh, Bihar & Odisha on 23<sup>rd</sup>; East Madhya Pradesh on 23<sup>rd</sup> & 24<sup>th</sup> August.**
- ❖ Light to moderate rainfall at most/many places accompanied with thunderstorm & lightning likely over the region during next 5 days.

#### Northwest India:

- ❖ **Extremely heavy rainfall** very likely over East Rajasthan on 23<sup>rd</sup> & 24<sup>th</sup> August.
- ❖ Isolated **heavy rainfall** likely over Uttarakhand & Rajasthan during next 7 days; Jammu & Kashmir, Himachal Pradesh, Punjab, Haryana, Chandigarh during 23<sup>rd</sup> - 26<sup>th</sup>; Uttar Pradesh during 23<sup>rd</sup>-25<sup>th</sup> & 29<sup>th</sup> August with **isolated very heavy rainfall over Himachal Pradesh, Punjab on 23<sup>rd</sup>; Uttarakhand during 23<sup>rd</sup>-25<sup>th</sup>; Haryana, Chandigarh on 23<sup>rd</sup> & 24<sup>th</sup>; West Rajasthan during 23<sup>rd</sup>-26<sup>th</sup>; East Rajasthan on 25<sup>th</sup> & 26<sup>th</sup> August.**
- ❖ Light/moderate rainfall at most/many places accompanied with thunderstorm & lightning likely over Jammu-Kashmir-Ladakh-Gilgit-Baltistan-Muzaffarabad, Uttarakhand & Rajasthan during next 7 days.

#### West India:

- ❖ **Spell of very heavy rainfall is very likely to continue over Gujarat state till 29<sup>th</sup> August.**
- ❖ **Extremely heavy rainfall** very likely over north Gujarat Region on 23<sup>rd</sup> August.
- ❖ **Heavy rainfall** is very likely to continue over Konkan & Madhya Maharashtra during 23<sup>rd</sup>-29<sup>th</sup> **August.**
- ❖ Strong surface winds (speed reaching 40-50 kmph) very likely over Gujarat coast during next 5 days.
- ❖ Light to moderate rainfall at most/many places very likely over the region during next 7 days.

#### Northeast India:

- ❖ Isolated **heavy rainfall** likely to continue over Arunachal Pradesh on 23<sup>rd</sup> & 24<sup>th</sup>; Assam & Meghalaya during 23<sup>rd</sup>-29<sup>th</sup>; Nagaland, Manipur, Mizoram & Tripura during 23<sup>rd</sup>-27<sup>th</sup> August.
- ❖ Light/moderate rainfall at many places accompanied with thunderstorm & lightning likely during next 2 days.

#### South Peninsular India:

- ❖ Isolated **heavy rainfall** likely over Tamil Nadu on 23<sup>rd</sup>; Kerala & Mahe during 26<sup>th</sup>-28<sup>th</sup>; Coastal Karnataka during 26<sup>th</sup>-29<sup>th</sup>; Coastal Andhra Pradesh & Yanam on 26<sup>th</sup> August.
- ❖ Strong surface winds (speed reaching 40-50 kmph) very likely over the region during next 3 days.
- ❖ Light to moderate rainfall at many/some places accompanied with thunderstorm & lightning likely over Tamil Nadu on 23<sup>rd</sup>; Telangana on 23<sup>rd</sup> & 24<sup>th</sup>; Coastal Andhra Pradesh & Yanam and interior Karnataka during next 6-7 days.

#### Fishermen warning:

Fishermen are advised not to venture into the following from 23<sup>rd</sup> August to 28<sup>th</sup> August 2025 to the following Areas:

##### Arabian Sea

Along and off the Somalia, Oman coasts and adjoining sea areas; over most parts of central Arabian Sea, some parts of southwest, northeast Arabian Sea during 23<sup>rd</sup> to 28<sup>th</sup> August; over southern parts of northwest Arabian Sea during 23<sup>rd</sup> to 28<sup>th</sup> August; along and off Gujarat coast during 23<sup>rd</sup> to 28<sup>th</sup> August, north Konkan coasts during 23<sup>rd</sup> to 26<sup>th</sup> August & entire Konkan, Goa coasts during 26<sup>th</sup> to 28<sup>th</sup> August; Karnataka coast during 26<sup>th</sup> to 28<sup>th</sup> August; Kerala coast on 27<sup>th</sup> August.

##### Bay of Bengal:

Along and off Odisha, West Bengal, Bangladesh coasts and north Bay of Bengal, adjoining central Bay of Bengal during 23<sup>rd</sup> August; along and off north Odisha, West Bengal coasts on 24<sup>th</sup> August; some parts of westcentral & eastcentral Bay of Bengal on 27<sup>th</sup> August; Gulf of Mannar during 23<sup>rd</sup> to 25<sup>th</sup> August.

#### ii. Weather conditions and forecast over Delhi/NCR during 23<sup>rd</sup> to 26<sup>th</sup> August, 2025 (Annexure IV)

For more details, kindly refer National Weather Bulletin:

[https://mausam.imd.gov.in/responsive/all\\_india\\_forecast\\_bulletin.php](https://mausam.imd.gov.in/responsive/all_india_forecast_bulletin.php)

For District wise warnings refer: <https://mausam.imd.gov.in/responsive/districtWiseWarningGIS.php>

For Fishermen warning refer <https://rsmcnewdelhi.imd.gov.in/fishermen-warning.php>

**Rainfall recorded (in cm) during past 24 hours till 0830 hours IST of today, the 23<sup>rd</sup> August:**

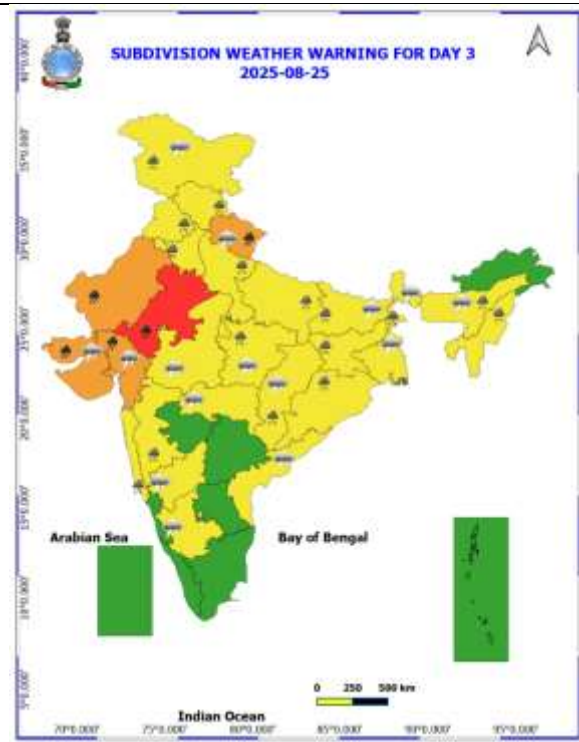
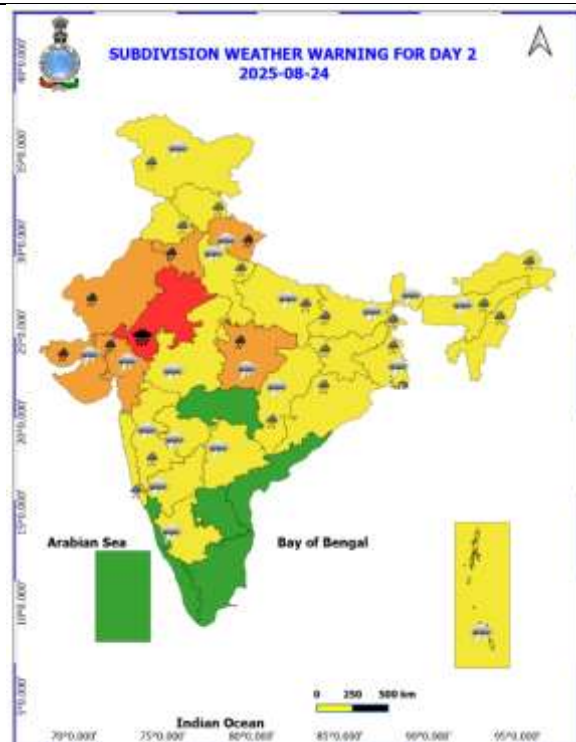
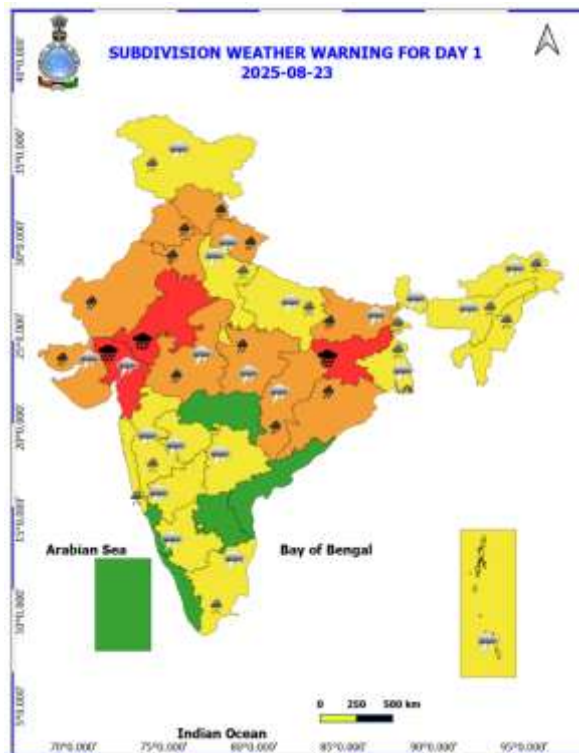
- ❖ **East Rajasthan:** Nainwa (dist Bundi) 50, Patan (dist Bundi) 31, Degod Sr (dist Kota) 27, Anta Sr (dist Baran) 24, Baran (dist Baran) 24, Kishanganj (dist Baran) 23, Uniara / Aligarh (dist Tonk) 22, Niwai (dist Tonk) 21, Mangrol (dist Baran) 20, Nagrarfort Sr (dist Tonk) 19, Indergarh Sr (dist Bundi) 18, Tonk Tehsil Sr (dist Tonk) 17, Hindoli (dist Bundi) 16, Shahabad (dist Baran) 16, Bundi (dist Bundi) 15, Sapotra (dist Karauli) 14, Bhungra Sr (dist Banswara) 12, Deoli (dist Tonk) 11, Sarmathura Sr (dist Dholpur) 10, Phagi (dist Jaipur) 10, Chomu (dist Jaipur) 10, Pipalda Sr (dist Kota) 10, Malerainadunger Sr (dist Sawai Madhopur) 10, Mahwa (dist Dausa) 9, Jahazpur (dist Bhilwara) 9, Chothkabarwara Sr (dist Sawai Madhopur) 9, Ladpura Sr (dist Kota) 9, Kota-aero (dist Kota) 9, Todaraisingh Sr (dist Tonk) 9, Mandrayal Sr (dist Karauli) 8, Atru Sr (dist Baran) 8, Nagar Sr (dist Bharatpur) 8, Sawaimadhopur Tesil Sr (dist Sawai Madhopur) 7, Todabhim (dist Karauli) 7, Talera Sr (dist Bundi) 7, Piplu Sr (dist Tonk) 7, Sawar Sr (dist Ajmer) 7, Bonli (dist Sawai Madhopur) 7;
- ❖ **Tamil Nadu:** Sholinganalur (dist Chennai), Zone 05 Parrys (dist Chennai) 17 each, Zone 14 Madipakkam (dist Chennai) 15, Ennore AWS (dist Tiruvallur), Arcot (dist Ranipet), Zone 07 Korattur (dist Chennai), Zone 11 Nerkundram (dist Chennai) 14 each, Cholavaram (dist Tiruvallur), Tiruttani (dist Tiruvallur) 13 each, Zone 14 Narayanapuram Lake (dist Chennai) 12, Tiruvallur (dist Tiruvallur), Zone 07 Ambattur (dist Chennai), Chembarambakkam ARG (dist Tiruvallur), Zone 11 Valasaravakkam (dist Chennai), Chembarabakkam\_REV (dist Tiruvallur), Zone 15 Okkiyam Thoraipakkam (dist Chennai) 11 each, Poondi (dist Tiruvallur), Jaya Engg College AWS (dist Tiruvallur), Kaveripakkam (dist Ranipet), Tiruttani AWS (dist Tiruvallur), Tiruttani PTO (dist Tiruvallur), Kalavai PWD (dist Ranipet), Zone 07 Ayapakkam (dist Chennai), Thiruvalangadu (dist Tiruvallur), Zone 14 Pallikaranai (dist Chennai), Zone 14 Medavakkam (dist Chennai) 10 each, Zone 06 Kolathur (dist Chennai), Koratur (dist Tiruvallur), Good Will School Villivakkam ARG (dist Tiruvallur), Poonamalle ARG (dist Tiruvallur), R.K.Pet ARG (dist Tiruvallur), Zone 13 Adyar (dist Chennai) 9 each, Chennai Collector Office (dist Chennai), Thamaraiappakkam (dist Tiruvallur), Ponnai Dam (dist Vellore), R.K.Pet (dist Tiruvallur), Zone 02 D15 Manali (dist Chennai), Vellore (dist Vellore), ACS Medical College ARG (dist Kancheepuram), Zone 02 Manali New Town (dist Chennai), Vaniyambadi (dist Tirupathur), Ranipet AWS (dist Ranipet), Palar Anicut (dist Ranipet), Panapakkam (dist Ranipet), Zone 15 Sholinganalur (dist Chennai), Zone 01 Wimco Nagar (dist Chennai), Zone 15 Kannagi Nagar (dist Chennai) 8 each, Zone 08 Anna Nagar West (dist Chennai), Chetpet (dist Tiruvannamalai), Arani (dist Tiruvannamalai), Katpadi (dist Vellore), Mettur AWS (dist Salem), Tirur KVK AWS (dist Tiruvallur), Minnal (dist Ranipet), Ambathur Rev (dist Chennai), Zone 15 Injambakkam (dist Chennai) 7 each;
- ❖ **Jharkhand:** Chandwa (dist Latehar) 21, Ghatsila (dist East Singhbhum) 20, Manoharpur Phc (dist West Singhbhum) 19, Manoharpur (dist West Singhbhum) 18, Sisai (dist Gumla) 16, Mayurhand (dist Chatra) 14, Kanhachatti (dist Chatra) 13, Ranchi Aero (dist Ranchi) 12, Chaibasa (dist West Singhbhum) 12, Kuru (dist Lohardaga) 12, Dhalbhumgarh (dist East Singhbhum) 11, Chandil (dist Seraikela-kharsawan) 11, Burmu (dist Ranchi) 11, Musabani (dist East Singhbhum) 11, Barkatha (dist Hazaribag) 11, Khalari (dist Ranchi) 10, Kumardungi (dist West Singhbhum) 10, Boram (dist East Singhbhum) 10, Pathalgada (dist Chatra) 10, Lohardaga Kvk Aws (dist Lohardaga) 9, Icar Namkum (dist Ranchi) 9, Gudri (dist West Singhbhum) 9, Hunterganj (dist Chatra) 9, Potka (dist East Singhbhum) 9, Sonua (dist West Singhbhum) 9, Jamshedpur Aero (dist East Singhbhum) 9, Latehar Balumat Kvk Aws (dist Latehar) 9, Chakulia (dist East Singhbhum) 8, Kharsema (dist Seraikela-kharsawan) 8, Majhgaon (dist West Singhbhum) 8, Arki (dist Khunti) 8, Chainpur (dist Palamu) 8, Nimdih (dist Seraikela-kharsawan) 8, Ramgarh (dist Palamu) 7, Dhurki (dist Garhwa) 7, Manjhari (dist West Singhbhum) 7;
- ❖ **Uttarakhand:** Sama (dist Bageshwar) 19, Loharkhet (dist Bageshwar) 18, Bhagwanpur (dist Hardwar) 11, Jollygrant (dist Dehradun) 11, Roorkee (dist Hardwar) 9, Kapkot (dist Bageshwar) 8;
- ❖ **Gujarat Region:** Vadali (dist Sabarkantha) 19, Khedbrahma (dist Sabarkantha) 18, Dharoi Colony (dist Mehsana) 14, Satlasana (dist Mehsana) 11, Idar (dist Sabarkantha) 8, Umerpada (dist Surat) 8, Dharampur (dist Valsad) 7;
- ❖ **West Madhya Pradesh:** Badoda (dist Sheopur) 17, Kolaras (dist Shivpuri) 16, Sheopur-aws (dist Sheopur) 13, Badarwas (dist Shivpuri) 11, Kathiwada (dist Alirajpur) 9, Chanderi (dist Ashoknagar) 7;
- ❖ **East Uttar Pradesh:** Varanasi/bab Aero (dist Varanasi) 16, Rajghat ( Vns Cwc ) (dist Varanasi) 14, Varanasi-b.h.u. (dist Varanasi) 11, Chunar (dist Mirzapur) 10, Churk (dist Sonbhadra) 8;

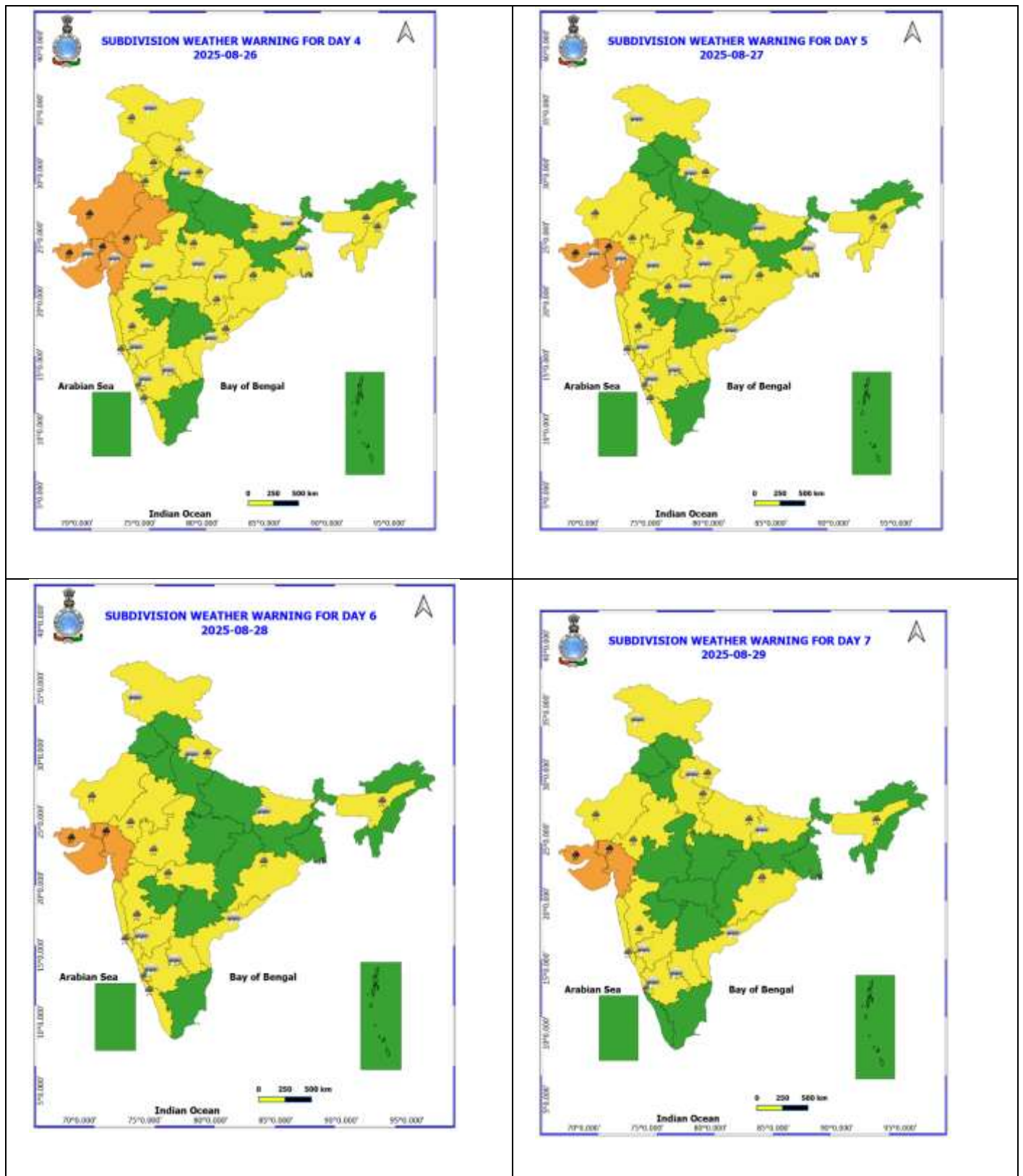
- ❖ **Odisha:** Naktideul (dist Sambalpur) 13, Bijatala (dist Mayurbhanj) 12, Tiring (dist Mayurbhanj) 12, Banspal (dist Keonjhar) 11, Jamda (dist Mayurbhanj) 11, Telkoi (dist Keonjhar) 10, Kusumi (dist Mayurbhanj) 9, Ghatagaon (dist Keonjhar) 9, Dhankauda (dist Sambalpur) 9, Kankadahad (dist Dhenkanal) 9, Chendipada (dist Angul) 9, Harichandanpur (dist Keonjhar) 9, Binika (dist Sonepur) 9, Ghasipura (dist Keonjhar) 9, Atabira (dist Bargarh) 9, Jujumura (dist Sambalpur) 8, Pallahara (dist Angul) 8, Tensa (dist Sundargarh) 7, Anandpur (dist Keonjhar) 7, Ambabhona (dist Bargarh) 7, Bargarh (dist Bargarh) 7, Rajkishorenagar (dist Angul) 7;
- ❖ **Haryana:** Jagadhari (dist Yamuna Nagar) 12, Nilokheri (dist Karnal) 10, Ladwa (dist Kurukshetra) 8, Tajewala (dist Yamuna Nagar) 7;
- ❖ **Assam & Meghalaya:** Sarupathar Arg (dist Golaghat) 11, Hazo Arg (dist Kamrup (rural)) 8, Mawkyrwat (dist South West Khasi Hills) 7;
- ❖ **West Rajasthan:** Nokha (dist Bikaner) 10, Sujangarh (dist Churu) 8;
- ❖ **Punjab:** Phangota (dist Pathankot) 9;
- ❖ **Rayalaseema:** Palasamudram (dist Chittoor) 9;
- ❖ **Chhattisgarh:** Pusaur (dist Raigarh) 9, Raigarh (dist Raigarh) 8, Marri Bangla Deori (dist Balod) 7, Ratanpur (dist Bilaspur) 7;
- ❖ **Gangetic West Bengal:** Burdwan (pto) (dist Purba Bardhaman) 9, Bankura(cwc) (dist Bankura) 8, Burnpur (dist Paschim Bardhaman) 8, Phulberia (dist Purulia) 8;
- ❖ **Bihar:** Raghunathpur (dist Siwan) 9, Obra (dist Aurangabad) 9, Atri (dist Gaya) 8, Mohra (dist Gaya) 8, Tribeni/balmikinagar (dist West Champaran) 8, Sahar (dist Bhojpur) 8, Kauwakol (dist Nawada) 8, Imamganj (dist Gaya) 7, Bagaha (dist West Champaran) 7, Rafiganj (dist Aurangabad) 7, Akorhi Gola (dist Rohtas) 7;
- ❖ **East Madhya Pradesh:** Pandhurna (dist Chindwara) 8, Bargi (dist Jabalpur) 7, Jabalpur-aws (dist Jabalpur) 7;
- ❖ **Nagaland:** Mangkolemba (dist Mokokchung) 7, Mokokchang (dist Mokokchung) 7



Table-1								
7 Days Rainfall Forecast								
S.No.	Subdivision	23- Aug	24- Aug	25- Aug	26- Aug	27- Aug	28- Aug	29- Aug
		Day 1	Day 2	Day 3	Day 4	Day 5	Day 6	Day 7
1	ANDAMAN & NICOBAR ISLANDS	WS	WS	WS	WS	WS	SCT	FWS
2	ARUNACHAL PRADESH	FWS	FWS	FWS	SCT	SCT	SCT	SCT
3	ASSAM & MEHGHALAYA	FWS	FWS	FWS	FWS	SCT	SCT	SCT
4	NAGALAND, MANIPUR, MIZORAM AND TRIPURA	FWS	FWS	FWS	FWS	FWS	FWS	FWS
5	SUB HIMALAYAN WEST BENGAL & SIKKIM	FWS	WS	WS	FWS	FWS	FWS	WS
6	GANGETIC WEST BENGAL	WS	WS	FWS	FWS	FWS	FWS	FWS
7	ODISHA	FWS	FWS	WS	WS	FWS	FWS	FWS
8	JHARKHAND	WS	WS	WS	FWS	FWS	FWS	FWS
9	BIHAR	FWS	FWS	FWS	SCT	SCT	SCT	SCT
10	EAST UTTAR PRADESH	WS	WS	WS	FWS	SCT	SCT	FWS
11	WEST UTTAR PRADESH	SCT	FWS	WS	FWS	FWS	SCT	SCT
12	UTTARAKHAND	WS	WS	WS	WS	FWS	FWS	WS
13	HARYANA, CHANDIGARH & DELHI	WS	WS	WS	FWS	SCT	ISOL	ISOL
14	PUNJAB	WS	WS	FWS	SCT	SCT	ISOL	ISOL
15	HIMACHAL PRADESH	WS	WS	WS	WS	FWS	FWS	FWS
16	JAMMU AND KASHMIR AND LADAKH	WS	WS	SCT	FWS	SCT	ISOL	ISOL
17	WEST RAJASTHAN	FWS	FWS	FWS	FWS	SCT	SCT	SCT
18	EAST RAJASTHAN	WS	WS	FWS	FWS	SCT	SCT	SCT
19	WEST MADHYA PRADESH	WS	FWS	FWS	FWS	WS	WS	WS
20	EAST MADHYA PRADESH	FWS	FWS	FWS	WS	WS	WS	WS
21	GUJRAT REGION	WS	WS	WS	WS	WS	WS	WS
22	SAURASHTRA & KUTCH	WS	WS	WS	WS	WS	WS	WS
23	KONKAN & GOA	WS	WS	WS	WS	WS	WS	WS
24	MADHYA MAHARASHTRA	SCT	ISOL	ISOL	ISOL	SCT	SCT	SCT
25	MARATHWADA	ISOL	ISOL	ISOL	ISOL	SCT	SCT	SCT
26	VIDARBHA	FWS	FWS	FWS	WS	WS	WS	FWS
27	CHHATTISGARH	WS	WS	WS	WS	WS	WS	WS
28	COASTAL ANDHRA PRADESH	ISOL	ISOL	ISOL	SCT	FWS	FWS	SCT
29	TELANGANA	ISOL	ISOL	ISOL	SCT	SCT	SCT	SCT
30	RAYALASEEMA	ISOL	ISOL	ISOL	SCT	SCT	SCT	ISOL
31	TAMILNADU & PUDUCHERRY	SCT	ISOL	ISOL	ISOL	ISOL	ISOL	ISOL
32	COSTAL KARNATAKA	FWS	FWS	WS	WS	WS	WS	WS
33	NORTH INTERIOR KARNATAKA	ISOL	ISOL	ISOL	SCT	FWS	FWS	FWS
34	SOUTH INTERIOR KARNATAKA	ISOL	ISOL	ISOL	SCT	FWS	FWS	FWS
35	KERALA AND MAHE	ISOL	ISOL	SCT	WS	WS	WS	FWS
36	LAKSHADWEEP	SCT	SCT	SCT	FWS	WS	WS	FWS

- As the lead period increases forecast accuracy decrease.





- Action may be taken based on ORANGE AND REDCOLOUR warnings.
- Vulnerable regions likely urban and hilly areas action may be initiated for heavy rainfall warning.
- As the lead period increases forecast accuracy decreases.

Detailed districtwise Multi Hazard weather warning for next five days available at <https://mausam.imd.gov.in/responsive/districtWiseWarningGIS.php>



**Weather forecast over Delhi/NCR during 23<sup>rd</sup> August to 26<sup>th</sup> August 2025****Past Weather:**

Minimum temperatures and Maximum temperatures showed no significant change during the past 24 hours over Delhi. Minimum temperatures ranged between 24–27 °C and maximum temperatures between 33–35 °C. Minimum temperatures and maximum temperatures were near normal. South easterly winds prevailed with wind speed upto 17 kmph with gusting up to 33kmph and maximum rainfall of 34 mm has been recorded at Mayur Vihar in past 24 hours over Delhi. Generally cloudy sky conditions and easterly winds upto 5-10 kmph prevailed over the region in the forenoon today.

**Weather Forecast:**

**23.08.2025:** Generally cloudy sky. One or two spells of very light/light rain/thundershowers at many places with moderate rain at a few places during afternoon/evening. Another spell of very light to light rain during night/early hours to morning. The maximum temperatures over Delhi are likely to be in the range of 32 to 34°C. The maximum temperature will be near normal. The predominant surface wind will likely be from the southeast direction with a wind speed of upto 10-15 kmph during the afternoon hours. The wind speed will become 10-15 kmph from the southeast direction during the evening and night.

**24.08.2025:** Generally cloudy sky. One or two spells of light to moderate rain/thundershowers. The maximum and minimum temperatures over Delhi are likely to be in the range of 30 to 32°C and 22 to 24°C respectively. The maximum and minimum temperature will be below normal upto 2 to 4 °C. The predominant surface wind will likely to be from the east direction with a wind speed of upto 10-15 kmph during morning hours. The predominant surface wind will likely to be from the southeast direction with a wind speed of 10-15 kmph during afternoon hours. The wind speed will remain same upto 10-15 kmph from the east direction during evening and night.

**25.08.2025:** Generally cloudy sky. light to moderate rain/ thundershowers. The maximum and minimum temperatures over Delhi are likely to be in the range of 30 to 32°C and 21 to 23°C respectively. The maximum and minimum temperature will be below normal upto 2 to 4°C. The predominant surface wind will likely to be from the southeast direction with a wind speed of upto 15-20 kmph during morning hours. The predominant surface wind will likely to be from the southeast direction with a wind speed of 15-20 kmph during afternoon hours. The wind speed will be from east direction with windspeed upto 10-15 kmph from evening to night.

**26.08.2025:** Generally cloudy sky. possibility of very light to light rain/thundershowers. The maximum and minimum temperatures over Delhi are likely to be in the range of 31 to 33°C and 21 to 23°C respectively. The maximum and minimum temperature will be below normal up to 1 to 3°C. The predominant surface wind will likely to be from the east direction with a wind speed of 20-25 kmph during morning, afternoon and evening.

**Impact & Action Suggested due to**

- ❖ **Extremely heavy rainfall** over Jharkhand, Gujarat Region on 23<sup>rd</sup>; East Rajasthan on 23<sup>rd</sup> & 24<sup>th</sup> August.
- ❖ **Very heavy rainfall** over Himachal Pradesh, Punjab, West Madhya Pradesh, Chhattisgarh, Bihar & Odisha on 23<sup>rd</sup>; Uttarakhand during 23<sup>rd</sup>-25<sup>th</sup>; Haryana, Chandigarh, East Madhya Pradesh on 23<sup>rd</sup> & 24<sup>th</sup>; West Rajasthan during 23<sup>rd</sup>-26<sup>th</sup>; East Rajasthan on 25<sup>th</sup> & 26<sup>th</sup>; Gujarat State during 23<sup>rd</sup>-29<sup>th</sup> August.

**Impact Expected**

- Localized Flooding of roads, water logging in low lying areas and closure of underpasses mainly in urban areas of the above region.
- Occasional reduction in visibility due to heavy rainfall.
- Disruption of traffic in major cities due to water logging in roads leading to increased travel time.
- Minor damage to kutcha roads.
- Possibilities of damage to vulnerable structure.
- Localized Landslides/Mudslides/landslips/mudslips/landsinks/mudsinks.
- Damage to horticulture and standing crops in some areas due to inundation.
- It may lead to riverine flooding in some river catchments (for riverine flooding please visit Web page of CWC)



### Action Suggested

- Check for traffic congestion on your route before leaving for your destination.
- Follow any traffic advisories that are issued in this regard.
- Avoid going to areas that face the water logging problems often.
- Avoid staying in vulnerable structure.

### Agromet advisories for likely impact of Heavy / Heavy to Very Heavy / Extremely Heavy Rainfall

- In **East Rajasthan**, make arrangements to drain out excess water from fields of rice, maize, soybean, black gram and groundnut in **Southeastern Humid Plain Zone**; pearl millet, sorghum, maize, green gram, black gram, moth bean, sesame and cluster bean in **Flood Prone Eastern Plain Zone**; groundnut, green gram, moth bean, cowpea, pearl millet, maize, sorghum and vegetables in **Semi-Arid Eastern Plain Zone**; vegetable nurseries, maize, soybean and groundnut in **Sub Humid Southern Plain and Aravali Hill Zone** and soybean, maize and cotton in **Southern Humid Plain Zone**. In **West Rajasthan**, make provision to drain out excess rain water from fields of pearl millet, green gram and cluster bean in **Arid Western Plain Zone**.
- In **Gujarat**, provide mechanical support to horticultural crops and staking or support to vegetables and young fruit plants to avoid lodging due to heavy rains and strong winds. Make arrangements to drain out excess water from fields of rice, sugarcane, vegetables and tuber crops in **South Gujarat Heavy Rainfall Zone**; groundnut, cotton, soybean, black gram, green gram, sesame and pigeon pea in **South Saurashtra Zone**; rice, cotton, green gram, black gram, pigeon pea, pearl millet and vegetables in **Bhal and Coastal Zone**; castor, cotton, groundnut, pearl millet and sesame in **North Gujarat Zone**; rice, pearl millet, pigeon pea, green gram, black gram, cotton, soybean, maize, castor and vegetables in **Middle Gujarat Zone**; rice, cotton, sugarcane and pigeon pea in **South Gujarat Zone**; groundnut, cotton, sesame, black gram, green gram, pigeon pea and castor in **North Saurashtra Zone** and *kharif* groundnut, cotton, soybean, black gram, green gram, sesame, pigeon pea and castor in **North West Zone**.
- In **Gangetic West Bengal**, ensure proper drainage in fields of rice and groundnut in **Laterite and Red Soil Zone**; rice, jute and vegetables in **New Alluvial Zone** and betel gardens and newly transplanted winter vegetables in **Coastal Saline Zone**. In **Sub-Himalayan West Bengal**, make provision to drain out excess water from *aman* rice and vegetable fields (chilli, bitter gourd, pointed gourd, okra, brinjal etc.) and cover the chilli seedlings with plastic to protect them from heavy rains in **Terai Zone**.
- In **Odisha**, make provision for draining out excess rain water from fields of rice, maize, black gram and vegetables in **North Central Plateau Zone**; finger millet, pulses, maize, groundnut and vegetables in **North Eastern Plateau Zone**; rice, vegetables and fruit orchards in **North Eastern Coastal Plain Zone**; rice, maize and vegetables in **West Central Table Land Zone** and maize, groundnut, sesame, pigeon pea and vegetables in **Mid Central Table Land Zone**. In **Keonjhar district**, postpone the sowing of green gram and black gram and nursery sowing and transplanting of tomato.
- In **Bihar**, ensure proper drainage to drain out excess rainwater from standing crops such as pigeon pea, turmeric, yam, sunflower and maize as well as from vegetable nurseries in **South Bihar Alluvial Zone**.
- In **Jharkhand**, ensure adequate drainage facilities in fields of rice, maize, black gram, green gram, tuber crops and vegetables and cover the vegetable seedlings with polythene to protect them from heavy rains in **Western Plateau Zone**.
- In **Madhya Pradesh**, provide adequate drainage in fields of soybean, maize and vegetables in **Malwa Plateau Zone**; maize, soybean, green gram, black gram, pigeon pea and vegetables in **Gird Zone**; soybean, maize and vegetables in **Kymore Plateau and Satpura Hill Zone**; soybean, green gram, black gram and maize in **Bundelkhand Zone** and soybean and vegetables in **Vindhyan Plateau Zone**.
- In **Chhattisgarh**, ensure proper drainage in fields of rice and vegetables and postpone fresh transplanting of rice in low land areas in **North Hill Zone**.
- In **Himachal Pradesh**, maintain proper drainage channels in ginger, turmeric and maize fields in **Mid Hills Sub Humid Zone** and rice, maize and vegetable fields in **Sub Montane and Low Hills Sub Tropical Zone**. In **High Hills Sub Temperate Wet Zone**, harvest ripened tomatoes and ensure proper drainage in maize, kidney bean, vegetable fields and fruit orchards.
- In **Uttarakhand**, maintain proper drainage channels in fields of soybean, maize, pulses, finger millet, ginger, vegetable and fruit orchards in **Hill Zone**; barnyard millet, finger millet and green gram in **Sub Humid Sub**

**Tropic Zone** and rice, green gram, black gram, sugarcane, maize, soybean, groundnut and vegetables in **Bhabar and Tarai Zone**.

- In **Punjab**, maintain proper drainage in chilli fields and remove stagnant rainwater immediately after rainfall in **Undulating Plain Zone**. Ensure proper drainage in fields of sugarcane, maize, soybean and green gram in **Sub-Montane Undulating Zone** and sugarcane, maize and cotton in **Central Plain Zone**.
- In **Haryana**, make arrangements to drain out excess water from fields of sugarcane, cotton, maize, pearl millet and vegetables in **Eastern Zone**.
- In **Meghalaya**, maintain proper drainage in ginger and vegetable fields and fruit orchards. Provide support to banana plants to prevent lodging. Maintain a thin 2-3 cm layer of stagnant water in rice fields after transplanting.
- In **Arunachal Pradesh**, ensure proper drainage in rice fields and maintain 5-7 cm water level. Maintain drainage channels in finger millet, banana and vegetable fields. Strengthen the bunds in millet fields to prevent erosion and seedling washout.

### Livestock / Fishery

- Keep the animals inside the shed during heavy rainfall and provide them balanced feed.
- Store feed and fodder in a safe place to prevent spoilage.
- Construct an outlet with proper netting around the ponds to drain out excess water, thereby preventing fish from escaping in case of overflow.

### Agromet advisories for likely impact of Thunderstorm / Gusty Winds / Squally Winds

- Provide mechanical support to horticultural crops and staking or support to vegetables and young fruit plants / fruit-bearing plants to avoid lodging due to strong winds.

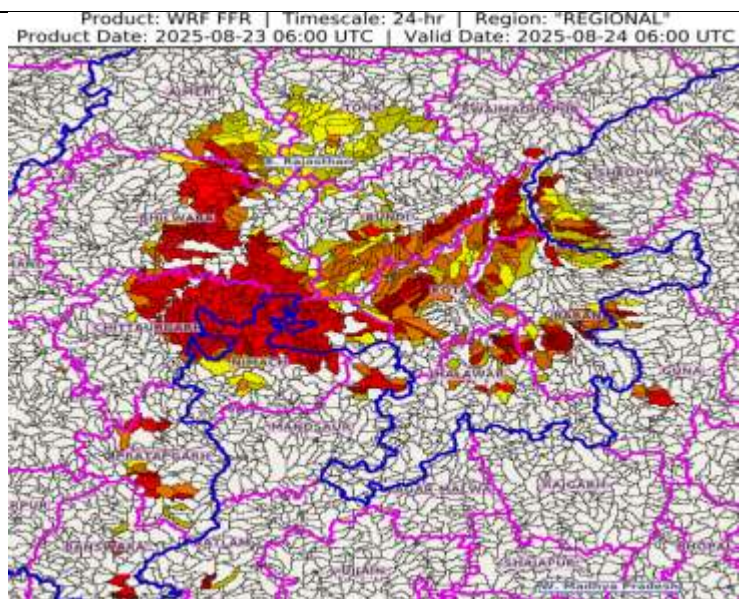
### Flash flood guidance:

24 hours Outlook for the Flash Flood Risk (FFR) till 1130 IST of 24-08-2025 :

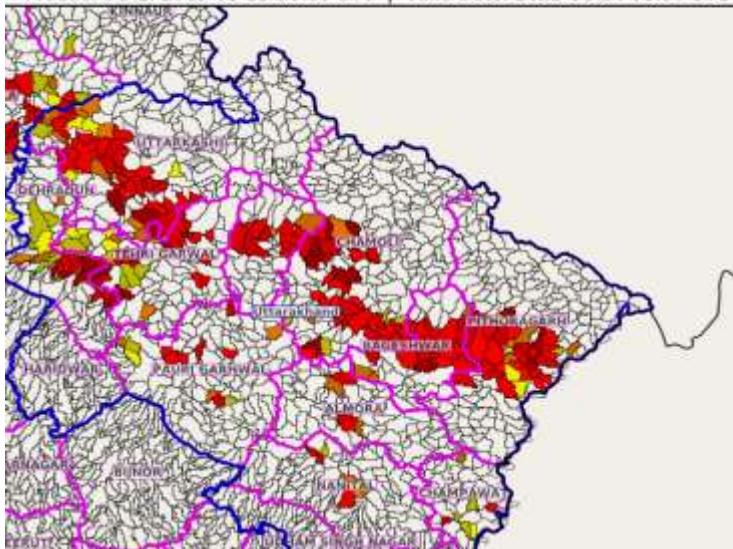
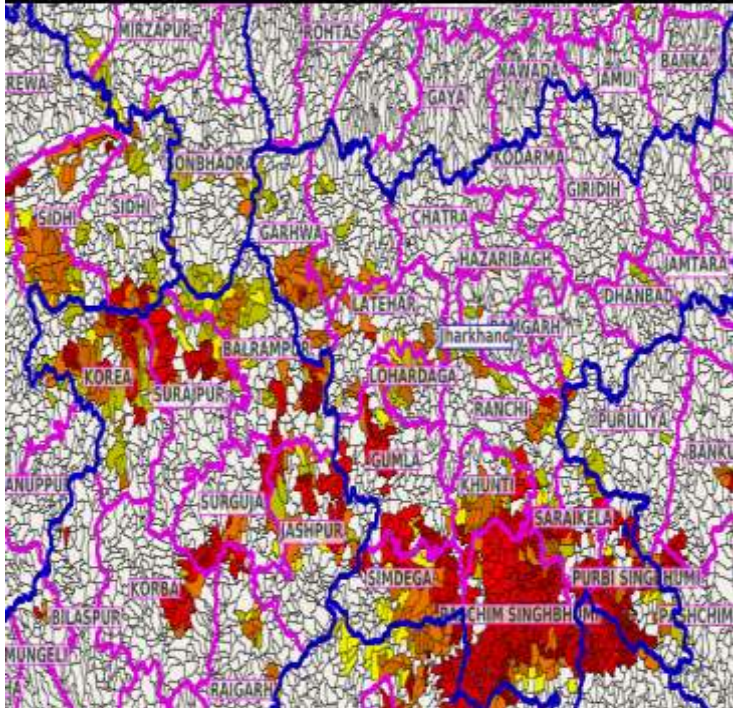
Low to Moderate flash flood risk likely over few watersheds & neighbourhoods of following Met Sub-divisions during next 24 hours.

East Rajasthan - Ajmer, Banswara, Baran, Bhilwara, Bundi, Chittaurgarh, Jhalawar, Kota, Pratapgarh, Swaimadhopur and Tonk districts.

Surface runoff/ Inundation may occur at some fully saturated soils & low-lying areas over Area of Concern (AoC) as shown in map due to expected rainfall occurrence in next 24 hours.





<p>24 hours Outlook for the Flash Flood Risk (FFR) till 1130 IST of 24-08-2025 :</p> <p>Low to Moderate flash flood risk likely over few watersheds &amp; neighbourhoods of following Met Sub-divisions during next 24 hours.</p> <p>Uttarakhand - Almora, Bageshwar, Chamoli, Champawat, Dehradun, Nanital, Pauri Garhwal, Pithoragarh, Rudraprayag, Tehri Garwal and Uttarkashi districts.</p> <p>Surface runoff/ Inundation may occur at some fully saturated soils &amp; low-lying areas over Area of Concern (AoC) as shown in map due to expected rainfall occurrence in next 24 hours.</p>	<p>Product: WRF FFR   Timescale: 24-hr   Region: "INDIA" Product Date: 2025-08-23 06:00 UTC   Valid Date: 2025-08-24 06:00 UTC</p> 
<p>24 hours Outlook for the Flash Flood Risk (FFR) till 1130 IST of 24-08-2025 :</p> <p>Moderate flash flood risk likely over few watersheds &amp; neighbourhoods of following Met Sub-divisions during next 24 hours.</p> <p>Jharkhand - Bokaro, Dhanbad, East Singhbhum, Garhwa, Gumla, Hazaribagh, Khunti, Latehar, Lohardaga, Palamu, Ramgarh, Ranchi, Saraikela, Simdega and West Singhbhum districts.</p> <p>Low to Moderate flash flood risk likely over few watersheds &amp; neighbourhoods of following Met Sub-divisions during next 24 hours.</p> <p>Chhattisgarh - Balarampur, Bilaspur, Jashpur, Korba, Korea, Mungeli, Raigarh, Surajpur and Surguja districts.</p> <p>Surface runoff/ Inundation may occur at some fully saturated soils &amp; low-lying areas over Area of Concern (AoC) as shown in map due to expected rainfall occurrence in next 24 hours.</p>	<p>Product: WRF FFR   Timescale: 24-hr   Region: "INDIA" Product Date: 2025-08-23 06:00 UTC   Valid Date: 2025-08-24 06:00 UTC</p> 

### **Legends & abbreviations:**

- ❖ **Heavy Rain:**64.5-115.5mm; **Very Heavy Rain:**115.6-204.4mm; **Extremely Heavy Rain:** >204.4mm.
- ❖ **Obsy:** Observatory; Automatic Weather Station; **ARG:** Automatic Rain Gauge; **dist:** District; **NH:** National Highway; **KVK:** Krishi Vigyan Kendra; **DVC:** Damodar Valley Corporation; **PTO:** Part Time Office, **Aero:** Aerodrome, **IAF:** Indian Air Force.
- ❖ **Region wise classification of meteorological Sub-Divisions:**
  - **Northwest India:** Western Himalayan Region (Jammu-Kashmir-Ladakh-Gilgit-Baltistan-Muzaffarabad, Himachal Pradesh and Uttarakhand); Punjab, Haryana-Chandigarh-Delhi; West Uttar Pradesh, East Uttar Pradesh, West Rajasthan and East Rajasthan.
  - **Central India:** West Madhya Pradesh, East Madhya Pradesh, Vidarbha and Chhattisgarh.
  - **East India:** Bihar, Jharkhand, Sub-Himalayan West Bengal & Sikkim; Gangetic West Bengal, Odisha and Andaman & Nicobar Islands.
  - **Northeast India:** Arunachal Pradesh, Assam & Meghalaya and Nagaland, Manipur, Mizoram & Tripura.
  - **West India:** Gujarat Region, Saurashtra & Kutch, Konkan & Goa, Madhya Maharashtra and Marathawada.
  - **South India:** Coastal Andhra Pradesh & Yanam, Telangana, Rayalaseema, Coastal Karnataka, North Interior Karnataka, South Interior Karnataka, Kerala & Mahe, Tamil Nadu, Puducherry & Karaikal and Lakshadweep.



## LEGENDS

1. अंडमान और निकोबार द्वीपसमूह

2. अरुणाचल प्रदेश

3. असम और मेघालय

4. नागालैंड, मणिपुर, मिजोरम और त्रिपुरा

5. उप-हिमालयी पश्चिम बंगाल और सिक्किम

6. गंगीय पश्चिम बंगाल

7. ओडिशा

8. झारखंड

9. बिहार

10. पूर्वी उत्तर प्रदेश

11. पश्चिम उत्तर प्रदेश

12. उत्तराखंड

13. हरियाणा, चंडीगढ़ और दिल्ली

14. पंजाब

15. हिमाचल प्रदेश

16. जम्मू और कश्मीर और लद्दाख

17. पश्चिम राजस्थान

18. पूर्वी राजस्थान

19. पश्चिम मध्य प्रदेश

20. पूर्वी मध्य प्रदेश

21. गुजरात

22. सौराष्ट्र

23. कोंकण और गोवा

24. मध्य महाराष्ट्र

25. मराठवाड़ा

26. विदर्भ

27. छत्तीसगढ़

28. तटीय आंध्र प्रदेश और यनम

29. तेलंगाना

30. रायलसीमा

31. तमिलनाडु, पुडुचेरी और कराईकल

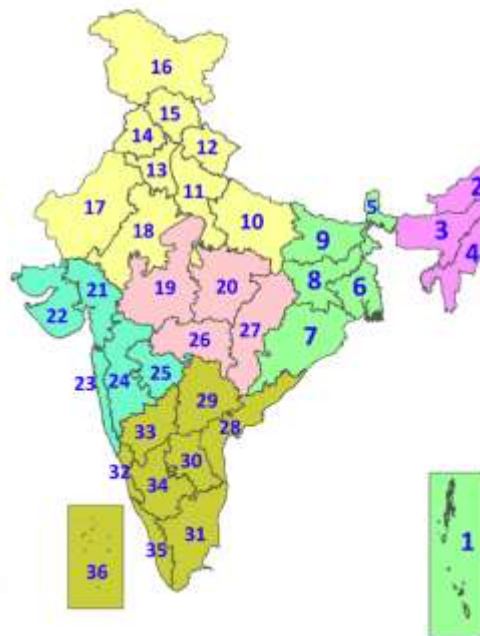
32. तटीय कर्नाटक

33. आंतरिक उत्तरी कर्नाटक

34. आंतरिक दक्षिणी कर्नाटक

35. केरल और माहे

36. लक्षद्वीप



1. Andaman & Nicobar Islands

2. Arunachal Pradesh

3. Assam & Meghalaya

4. Nagaland, Manipur, Mizoram & Tripura

5. Sub-Himalayan West Bengal & Sikkim

6. Gangetic West Bengal

7. Odisha

8. Jharkhand

9. Bihar

10. East Uttar Pradesh

11. West Uttar Pradesh

12. Uttarakhand

13. Haryana, Chandigarh & Delhi

14. Punjab

15. Himachal Pradesh

16. Jammu & Kashmir and Ladakh

17. West Rajasthan

18. East Rajasthan

19. West Madhya Pradesh

20. East Madhya Pradesh

21. Gujarat

22. Saurashtra

23. Konkan & Goa

24. Madhya Maharashtra

25. Marathwada

26. Vidarbha

27. Chhattisgarh

28. Coastal Andhra Pradesh & Yanam

29. Telangana

30. Rayalaseema

31. Tamilnadu, Puducherry & Karaikal

32. Coastal Karnataka

33. North Interior Karnataka

34. South Interior Karnataka

35. Kerala & Mahe

36. Lakshadweep

## SPATIAL DISTRIBUTION (% of Stations reporting)

% Stations	Category	% Stations	Category
76-100	Widespread (WS/Most Places)	26-50	Scattered (SCT/A Few Places)
51-75	Fairly Widespread (FWS/Many Places)	1-25	Isolated (ISOL)



Fog



Heavy Snow



Cold Wave



Heavy Rain



Dust Storm



Cold Day



Very Heavy Rain



Heat Wave



Ground Frost



Extremely Heavy Rain



Warm Night



Thunder & Lightning



Hot Day



Hailstorm



Hot & Humid



Dust Raising Winds



Strong Surface Winds

### COLOUR CODED WARNING

No Warning (No Action)

Watch (Be Aware)

Alert (Be Prepared To Take Action)

Warning (Take Action)

### Probabilistic Forecast

Terms	Probability of Occurrence (%)
Unlikely	< 25
Likely	25 - 50
Very Likely	50 - 75
Most Likely	> 75

\* Red colour warning does not mean "Red Alert", Red colour warning means "Take Action".

Forecast and Warning for any day is valid from 0830 hours IST of day till 0830 hours IST of next day.

For more details, kindly visit <https://mausam.imd.gov.in> or contact: 011-2434-4599

(Service to the Nation since 1875)

## DEFINITION/CRITERIA

### Rain/ Snow \*

Heavy: 64.5 to 115.5 mm/cm \*  
Very Heavy: 115.6 to 204.4 mm/cm \*  
Extremely Heavy: > 204.4 mm/cm \*

### Heat Wave

When maximum temperature of a station reaches  $\geq 40^\circ\text{C}$  for plains and  $\geq 30^\circ\text{C}$  for hilly regions  
(a) Based on Departure from normal

Heat Wave: Maximum Temperature Departure from normal  $4.5^\circ\text{C}$  to  $6.4^\circ\text{C}$ .

Severe Heat Wave: Maximum Temperature Departure from normal  $\geq 6.5^\circ\text{C}$

(b). Based on Actual maximum temperature

Heat Wave: When actual maximum temperature  $\geq 45^\circ\text{C}$ .

Severe Heat Wave: When actual maximum temperature  $\geq 47^\circ\text{C}$ .

(c). Criteria for heat wave for coastal stations

When maximum temperature departure is  $> 4.5^\circ\text{C}$  from normal. Heat Wave may be described provided maximum temperature  $\geq 37^\circ\text{C}$ .

### Warm Night

When maximum temperature remains  $40^\circ\text{C}$

Warm Night: When minimum temperature departure  $4.5^\circ\text{C}$  to  $6.4^\circ\text{C}$ .

Severe Warm Night: When minimum temperature departure  $> 6.4^\circ\text{C}$ .

### Cold Wave

When minimum temperature of a station  $\leq 10^\circ\text{C}$  for plains and  $\leq 0^\circ\text{C}$  for hilly regions.

(a). Based on departure

Cold Wave: Minimum Temperature Departure from normal  $-4.5^\circ\text{C}$  to  $-6.4^\circ\text{C}$ .

Severe Cold Wave: Minimum Temperature Departure from normal  $\leq -6.5^\circ\text{C}$

(b) Based on actual Minimum Temperature (for Plains only)

Cold Wave: When Minimum Temperature is  $\leq 4.0^\circ\text{C}$

Severe Cold Wave: When Minimum Temperature is  $\leq 2.0^\circ\text{C}$

(c) For Coastal Stations

When Minimum Temperature departure is  $\leq -4.5^\circ\text{C}$  & actual Minimum Temperature is  $\leq 15^\circ\text{C}$

### Cold Day

When minimum temperature of a station  $\leq 10^\circ\text{C}$  for plains and  $\leq 0^\circ\text{C}$  for hilly regions

Based on departure

Cold Day: Maximum Temperature Departure from normal  $-4.5^\circ\text{C}$  to  $-6.4^\circ\text{C}$ .

Severe Cold Day: Maximum Temperature Departure from normal  $\leq -6.5^\circ\text{C}$

### Fog

Phenomenon of small droplets suspended in air and the horizontal visibility  $< 1\text{km}$

Moderate Fog: When the visibility between 500-200 metres

Dense Fog: when the visibility between 50- 200 metres

Very Dense Fog: when the visibility  $< 50$  metres

### Thunderstorm

Sudden electrical discharges manifested by a flash of light (Lightning) and a sharp rumbling sound (thunder)

### Dust/Sand Storm

An ensemble of particles of dust or sand energetically lifted to great heights by a strong and turbulent wind.

### Frost

Ice deposits on ground

Air temperature  $\leq 4^\circ\text{C}$  ( over Plains)

### Squall

A strong wind that rises suddenly, lasts for atleast 1 minute.

Moderate: Wind speed 52-61 kmph

Severe: Wind speed 62-67 kmph

Very Severe: Wind speed  $> 67$  kmph

### Sea State

Effect of various waves in the sea over specific area

Rough to very rough: Wind speed 41-62 kmph (22-33 knots) & Wave height 2.5-6 metre

High to very high: Wind speed 63-117 kmph ( 34-63 knots) & Wave height 6-14 metre

Phenomenal: Wind speed  $> 117$  kmph ( $> 63$  knots) & Wave height  $> 14$  metre

### Cyclone

Cyclonic Storm: Wind speed 62-87 kmph (34-47 knots)

Severe Cyclonic Storm: Wind speed 88-117 kmph (48-63 knots)

Very Severe Cyclonic Storm: Wind speed 118-165 kmph (64 - 89 knots)

Extremely Severe Cyclonic Storm: Wind speed 166-220 kmph (90 -119 knots)

Super Cyclone Storm: Wind speed  $> 220$  kmph ( $> 119$  knots)

\* Red colour warning does not mean "Red Alert", Red colour warning means "Take Action".

Forecast and Warning for any day is valid from 0830 hours IST of day till 0830 hours IST of next day.

For more details, kindly visit <https://mausam.imd.gov.in> or contact: 011-2434-4599

(Service to the Nation since 1875)

**Hot and Humid:** When maximum temperatures remain  $3^\circ\text{C}$  above normal along with the above normal relative humidity.